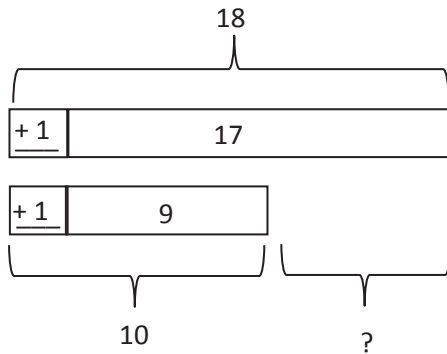


Name _____

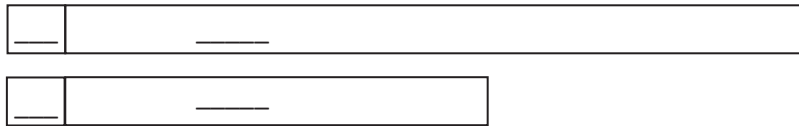
Date _____

1. Solve. Draw and label a tape diagram to subtract 10, 20, 30, 40, etc.

a. $17 - 9 = \underline{18 - 10} = \underline{\quad}$



b. $33 - 19 = \underline{\quad} = \underline{\quad}$



c. $60 - 29 = \underline{\quad} = \underline{\quad}$

d. $56 - 38 = \underline{\quad} = \underline{\quad}$

2. Solve. Draw a number bond to add 10, 20, 30, 40, etc.

a. $28 + 43 = \underline{30 + 41} = \underline{\quad}$

b. $49 + 26 = \underline{\quad} = \underline{\quad}$

c. $43 + 19 = \underline{\quad} = \underline{\quad}$

d. $67 + 28 = \underline{\quad} = \underline{\quad}$

3. Kylie has 28 more oranges than Cynthia. Kylie has 63 oranges. How many oranges does Cynthia have? Draw a tape diagram or number bond to solve.